

# Moab Grid Suite®

## Overview

**Moab Grid Suite** is a powerful grid-workload management solution that includes scheduling, advanced policy management, and tools to control all the components of advanced grids. Unlike other grid solutions, Moab Grid Suite connects disparate clusters into a logical whole, enabling grid administrators and grid policies to have sovereignty over all systems while preserving control at the individual cluster.

Moab Grid Suite has powerful applications that allow organizations to consolidate reporting; information gathering; and workload, resource, and data management. Moab Grid Suite delivers these services in a near-transparent way: users are unaware they are using grid resources—they know only that they are getting work done faster and more easily than ever before.

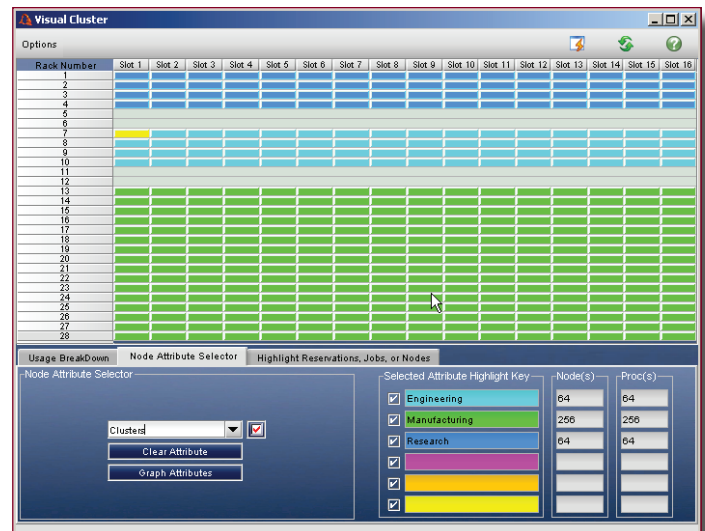
Moab manages many of the largest clusters and grids in the world. Moab technologies are used broadly across Fortune 500 companies; in fact, Moab is licensed on more Top500 compute resources than any competitor's solution. Adaptive Computing is a globally trusted ISV (independent software vendor), and Moab prices can be one-half to one-fourth the price of other tools on the market today.

## Components

- ▶ **Moab Workload Manager® for Grids**—a policy-based workload-management and scheduling engine
- ▶ **Moab Grid Manager®**—a powerful graphical cluster-administration interface, monitor, and reporting tool
- ▶ **Moab Access Portal® for Grids**—a Web-based end-user job-submission and management portal

## Benefits

- ▶ **Unified management** across heterogeneous clusters provides ability to move quickly from cluster to optimized grid
- ▶ **Intelligent scheduling** ensures that jobs start and run in the fastest time possible by selecting optimal resources
- ▶ **Flexible policy and event engine** adjusts workload processing at both grid and cluster level



The *Visual Cluster* view in Moab Grid Manager makes cluster and grid management easy and efficient.

- ▶ **Grid-wide interface and reporting tools** provide view of grid resources, status and usage charts, and trends over time for capacity planning, diagnostics, and accounting
- ▶ **Advanced administrative control** allows various business units to access and view grid resources, regardless of physical or organizational boundaries, or alternatively restricts access to resources by specific departments or entities

## Grid Control with Automated Tasks, Policies, and Reporting

- ▶ Guarantee that the most-critical work runs first with flexible global policies that respect local cluster policies but continue to support grid service-level agreements
- ▶ Ensure availability of key resources at specific times with advanced reservations
- ▶ Tune policies prior to rollout with cluster- and grid-level simulations
- ▶ Use a global view of all grid operations for self-diagnosis, planning, reporting, and accounting across all resources, jobs, and clusters

## Cluster Sovereignty and Trusted Sharing

- ▶ Guarantee that shared resources are allocated fairly with global policies that fully respect local cluster configuration and needs
- ▶ Establish trust between resource owners through graphical usage controls, reports, and accounting across all shared resources
- ▶ Maintain cluster sovereignty with granular settings to control where jobs can originate and be processed
- ▶ Establish resource ownership and enforce appropriate access levels with prioritization, preemption, and access guarantees

## Increase User Collaboration and Productivity

- ▶ Reduce end-user training and job management time with easy-to-use graphical interfaces
- ▶ Enable end users to easily submit and manage their jobs through a Web browser, minimizing the costs of catering to a growing base of needy users
- ▶ Collaborate more effectively with multicluster co-allocation, allowing key resources to be reserved for high-priority projects
- ▶ Leverage saved job templates, allowing users to submit multiple jobs quickly and with minimal changes

## Process More Work in Less Time to Maximize ROI

- ▶ Achieve higher, more consistent resource utilization with intelligent scheduling, matching job requests to the best-suited resources
- ▶ Use optimized data staging to ensure that remote data transfers are synchronized with resource availability to minimize poor utilization

- ▶ Achieve better job performance with automatic learning that improves scheduling decisions based on historical workload results
- ▶ Allow local cluster-level optimizations of most grid workload

## Unify Management Across Independent Clusters

- ▶ Unify management across existing internal, external, and partner clusters—even if they have different resource managers, databases, operating systems, and hardware
- ▶ Get out-of-the-box support for both local area grids and wide area grids
- ▶ Manage secure access to resources with simple credential mapping or interface with popular security tool sets
- ▶ Leverage existing data-migration technologies, such as SCP or GridFTP

## Free 45-day Evaluation

Your organization is invited to try Moab Cluster Suite or Moab Grid Suite for 45 days with full technical support—absolutely free—by using our 256-node demonstration cluster or by downloading and running Moab Cluster Suite on your own cluster or grid, with or without affecting your live workload, at your option.

Full information about the Moab Grid Suite free evaluation offer is available from the Moab Download Center at—

<http://www.clusterresources.com/product/mdc/>

- ▶ You will be asked to register for a free account at our website so that you can use the Moab Download Center.
- ▶ To run Moab Grid Suite on your system, you will first need to obtain a license key from an Adaptive Computing solutions advisor (see contact information below).

## Let's Talk . . . Set Up a Private Demo . . . and Test in Your Environment

- ▶ An Adaptive Computing solutions advisor can guide you to the products and services that will best meet your needs, and our engineers will work with you to set up a live, online interactive demonstration designed specifically for your organization. We'll then help you install and test our solutions on your hardware, and we'll provide free technical support throughout the evaluation period.
- ▶ Contact a solutions advisor by phone or email, or visit our Web site today—

North America, Latin America, Asia-Pacific . . . . . +1 (801) 717.3700  
Europe, Middle East, Africa . . . . . +44 (0) 1483 243578  
Email . . . . . [solutions@adaptivecomputing.com](mailto:solutions@adaptivecomputing.com)  
Web site . . . . . [www.adaptivecomputing.com](http://www.adaptivecomputing.com)